

Legal Description – RD AIR SERVICES LEASE AREA

A PORTION OF SECTION 23, TOWNSHIP 9 SOUTH, RANGE 20 EAST, ALACHUA COUNTY, FLORIDA, BEING MORE PARTICULARLY DESCRIBED AS FOLLOWS:

COMMENCE AT THE NORTHEAST CORNER OF SECTION 23, TOWNSHIP 9 SOUTH, RANGE 20 EAST, ALACHUA COUNTY, FLORIDA AND RUN THENCE SOUTH 89°01'19" WEST, ALONG THE NORTH LINE OF SAID SECTION 23, A DISTANCE OF 1351.97 FEET TO A POINT ON THE CENTERLINE OF THE FORMER CSX TRANSPORTATION INC. RAILROAD RIGHT OF WAY (120' RIGHT OF WAY); THENCE SOUTH 29°34'20" WEST, ALONG SAID CENTERLINE, 3129.72 FEET; THENCE SOUTH 60°25'40" EAST, 384.74 FEET TO THE POINT OF BEGINNING; THENCE NORTH 29°34'20" EAST, A DISTANCE OF 64.09 FEET; THENCE NORTH 40°17'17" EAST, A DISTANCE OF 304.20 FEET; THENCE SOUTH 50°06'37" EAST, A DISTANCE OF 317.40 FEET; THENCE NORTH 82°57'22" EAST, A DISTANCE OF 176.55 FEET TO THE BEGINNING OF A CURVE, CONCAVE NORTHWESTERLY, HAVING A RADIUS OF 30.00 FEET; THENCE NORTHEASTERLY, ALONG THE ARC OF SAID CURVE, THROUGH A CENTRAL ANGLE OF 55°43'55", AN ARC DISTANCE OF 29.18 FEET TO A POINT OF INTERSECTION WITH A NON-TANGENT LINE, SAID ARC BEING SUBTENDED BY A CHORD HAVING A BEARING AND DISTANCE OF NORTH 55°05'24" EAST, 28.04 FEET; THENCE SOUTH 43°28'39" EAST, A DISTANCE OF 63.52 FEET; THENCE SOUTH 82°57'22" WEST, A DISTANCE OF 163.37 FEET TO THE BEGINNING OF A CURVE, CONCAVE SOUTHEASTERLY, HAVING A RADIUS OF 90.00 FEET; THENCE SOUTHWESTERLY, ALONG THE ARC OF SAID CURVE, THROUGH A CENTRAL ANGLE OF 119°21'46", AN ARC DISTANCE OF 187.49 FEET TO THE END OF SAID CURVE, SAID ARC BEING SUBTENDED BY A CHORD HAVING A BEARING AND DISTANCE OF SOUTH 23°16'29" WEST, 155.38 FEET; THENCE SOUTH 60°04'20" WEST, A DISTANCE OF 229.14 FEET; THENCE NORTH 29°28'32" WEST, A DISTANCE OF 123.08 FEET; THENCE NORTH 50°08'16" WEST, A DISTANCE OF 127.71 FEET; THENCE SOUTH 75°52'06" WEST, A DISTANCE OF 21.98 FEET; THENCE NORTH 60°25'40" WEST, A DISTANCE OF 49.91 FEET; THENCE SOUTH 29°34'20" WEST, A DISTANCE OF 39.84 FEET; THENCE NORTH 60°25'40" WEST, A DISTANCE OF 56.00 FEET TO THE POINT OF BEGINNING.

CONTAINING 3.055 ACRES, MORE OR LESS.

Surveyor's Notes

1. The bearings shown hereon were projected from the North line of Section 23, Township 9 South, Range 20 East, Alachua County, Florida as being South 89°01'19" West.
2. The distances shown are in feet and are in the horizontal plane.
3. No search of the public records has been conducted by this office.
4. This description and sketch or the copies thereof are not valid without the signature and the original raised seal of a Florida licensed surveyor and mapper, unless accompanied by an electronic signature in accordance with Chapter 5J-17.062, Florida Administrative Code.
5. Abbreviations:

ORB Official Records Book
 POB Point of Beginning
 POC Point of Commencement
 Pg(s) Page or Pages
 R/W Right-of-Way
 R Radius
 L Arc Length
 D Delta (Central) Angle
 CB Chord Bearing
 CD Chord Distance

 Jared Rogers
 Professional Surveyor and Mapper
 State of Florida License No. 6687
 Corporate Authorization No. LB 2389

Legal Description & Sketch Prepared For: GAINESVILLE REGIONAL AIRPORT

Project:	2024-0047.S00
Date:	4/17/2024
Sheet:	1 of 2
THIS IS NOT A SURVEY	



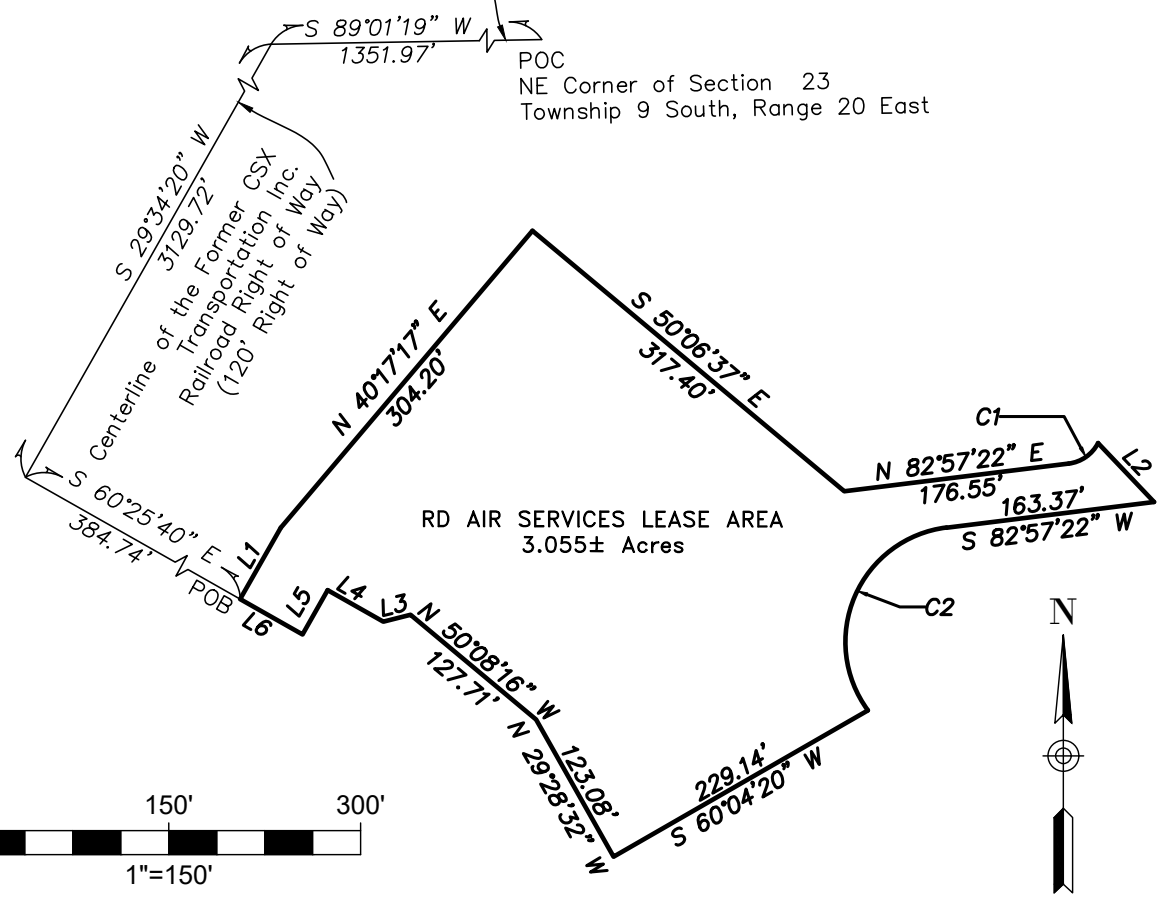
eda consultants inc.
 LB 2389
 720 SW 2nd Avenue, South Tower, Suite 300
 Gainesville, Florida 32601
 TEL: (352) 373-3541
 E-MAIL: mail@edafit.com

LINE	BEARING	DISTANCE
L1	N29°34'20"E	64.09'
L2	S43°28'39"E	63.52'
L3	S75°52'06"W	21.98'
L4	N60°25'40"W	49.91'
L5	S29°34'20"W	39.84'
L6	N60°25'40"W	56.00'

C1	C2
R=30.00'	R=90.00'
L=29.18'	L=187.49'
D=55°43'55"	D=119°21'46"
CB=N55°05'24"E	CB=S23°16'29"W
CD=28.04'	CD=155.38'

North Line of Section 23
Township 9 South, Range 20 East

POC
NE Corner of Section 23
Township 9 South, Range 20 East



Legal Description & Sketch Prepared For: GAINESVILLE REGIONAL AIRPORT

Project:	2024-0047.S00
Date:	4/17/2024
Sheet:	2 of 2
THIS IS NOT A SURVEY	



eda consultants inc.
LB 2389
720 SW 2nd Avenue, South Tower, Suite 300
Gainesville, Florida 32601
TEL: (352) 373-3541
E-MAIL: mail@edafirm.com